



Acme Sanitary Ware Co Ltd


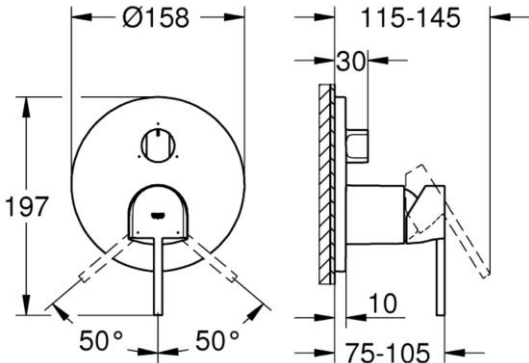
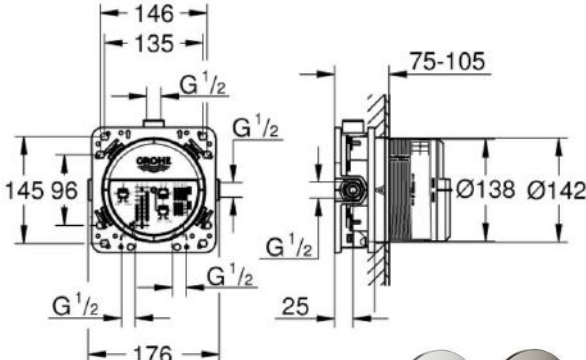

Acme Building, 22-28 Nanking Street, Kowloon, Hong Kong
 Tel: 2388 7171 Fax: 2710 8012
 E-mail: acme@acmesanitary.com.hk
 Website: www.acmesanitaryware.com.hk




Pure Freude
an Wasser

PROJECT		REF		REV	ITEM CODE	
LOCATION		DATE			PAGE	

SANITARY WARE SPECIFICATION SHEET

Item Descriptions	GROHE (Germany) "Plus" Chrome plated single-lever bath & shower mixer with 3-way diverter	<div>Illustration/ Drawing</div> <div></div> <div></div> <div></div> <div>Colour options: <ul style="list-style-type: none">003 StarLight ChromeDC3 SuperSteelAL31 Brushed Hard Graphite</div> <div></div>
Dimensions	L158 x W145 x H197 mm	
Model	24093003 (Bath & Shower mixer) 35600000 (Mounting box)	
Finish	Chrome Plated	
Country of origin	Germany	
Manufacturer	GROHE Limited	
Supplier	Acme Sanitary Ware Co. Ltd Mr. Eric Wong/ Mr. Don Yuen	
Contact Tel/Fax	(852) 2388-7171 / (852) 2710-8012	
E-mail	acme@acmesanitary.com.hk	
Website	www.acmesanitary.com.hk	
"Plus" Single-lever mixer with 3-way diverter <ul style="list-style-type: none">• set for final installation for• GROHE Rapido SmartBox 35 600• GROHE SilkMove 46 mm ceramic cartridge• GROHE StarLight chrome finish• wall escutcheon with GROHE QuickFix (covered escutcheon- and shaft sealing, covered fixing)• metal escutcheon, retroactively 6° adjustable• metal lever• 3-way diverter• flow performance: outlet A = 27 l/min, outlet B = 27 l/min, outlet C = 27 l/min• without roughing-in-set		"GROHE Rapido SmartBox " Universal rough-in box, 1/2 " <ul style="list-style-type: none">• 3 outlets 1/2"• 2 inlets below, 1/2"• installation depth 75-105 mm• connection unit in DR brass• pre-mounted flushing plug• stable build-in box and protective cover• fixing options for solid walls and dry cladding• gasket• without set for final installation

Note:  [YouTube ^{HK} \(GROHE PLUS Faucet Collection\) https://www.youtube.com/watch?v=OcYTTcnL174](https://www.youtube.com/watch?v=OcYTTcnL174)

 [YouTube ^{HK} \(24093003\) https://www.youtube.com/watch?v=nhB6-Ck7FHg](https://www.youtube.com/watch?v=nhB6-Ck7FHg)

 [YouTube ^{HK} \(Rapido SmartBox | Installation Video\) https://www.youtube.com/watch?v=KsWdVrq9fVI](https://www.youtube.com/watch?v=KsWdVrq9fVI)

* All information of the above is for the reference only. No prior notice is made if any changes.



Acme Sanitary Ware Co Ltd

Acme Building, 22-28 Nanking Street, Kowloon, Hong Kong
Tel: 2388 7171 Fax: 2710 8012
E-mail: acme@acmesanitaryware.com.hk
Website: www.acmesanitaryware.com.hk



Pure Freude
an Wasser

PROJECT		REF		REV	ITEM CODE	
LOCATION		DATE			PAGE	

SANITARY WARE SPECIFICATION SHEET

GROHE PLUS

ACCURACY THAT GOES BEYOND DESIGN

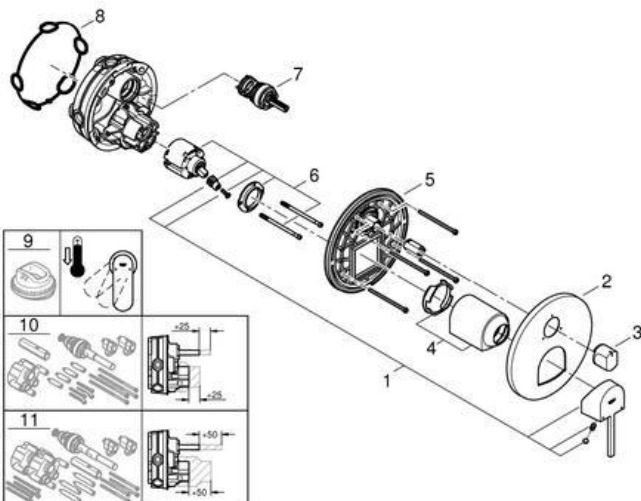
Imagine a bathroom that offers not just sleek, cutting-edge, bold design, but also confidence and control. Where you can tell water temperature at a glance and switch water flow with just a swipe of your hand. A room where nothing is left to chance, where form delivers function in a sleek, tactile package. With the new GROHE Plus you can make it a reality.

This innovative range puts control and convenience in your hands, delivering accurate temperature information at a glance. The GROHE Plus range includes some faucets with a temperature display, so you know the water will always be just the right temperature. GROHE Plus also offers a new level of ergonomic comfort and practical function too, presented in a silhouette of architectural strength and elegance, with surfaces so sleek they invite interaction.



MORE THAN 200 POSSIBLE COMBINATIONS WITH GROHE RAPIDO SMARTBOX

As concealed mixing valves for showers and bathtubs are becoming increasingly successful, concealed units are in great demand. With its minimum installation depth of only 75mm, GROHE's Rapido Smartbox can be easily installed for all showers/bathtubs. The Rapido Smartbox concealed body allows you to control up to three water outlets and is compatible with all GROHE concealed models.



Pos.-nr.	Prod. description	Order-nr.
1	Lever	48496000
2	Escutcheon	49117000
3	Diverter knob, round	48447000
4	Cap	48495000
5	Mounting plate	49095000
6	Cartridge	46048000
7	Diverter	48448000
8	Seal	48360000
9	Temperature limiter	46308000*
10	Universal extension set single-lever mixers, 25 mm	14056000*
11	Universal extension set single-lever mixers, 50 mm	14057000*

* Optional accessories

Note:

* All information of the above is for the reference only. No prior notice is made if any changes.



Acme Sanitary Ware Co Ltd

Acme Building, 22-28 Nanking Street, Kowloon, Hong Kong
Tel: 2388 7171 Fax: 2710 8012
E-mail: acme@acmesanitaryware.com.hk
Website: www.acmesanitaryware.com.hk



Pure Freude
an Wasser

PROJECT		REF		REV	ITEM CODE	
LOCATION		DATE			PAGE	

SANITARY WARE SPECIFICATION SHEET

Just one plumber-friendly rough-in for entire range

Three outlets for a wider range of shower options

Efficient installation thanks to bottom inlets

75mm

Exchangeable function units for single-lever mixers, thermostats and SmartControl, fully pre-configured and 100% factory tested

All thermostats with retrofit service stops

Subsequently adjustable by up to six degrees; ensures that the wall plate is always in level and allows for perfect alignment with tile joints

Note:

* All information of the above is for the reference only. No prior notice is made if any changes.



Department

香港上打道七號入境事務大樓 48 樓

48/F, Immigration Tower, 7 Gloucester Road, Wan Chai, Hong Kong

本署檔號 : (2) in WSD 3321/2020 T/J(857/2020)
Our ref.
來函檔號 :
Your ref.

電話 :
Tel.
傳真 : 2824 0578
Fax

20 August 2020

**Approval of "Grohe" Shower Mixer
(General Acceptance No. C20200692)**

Your letter ref. WRC/2284 dated 10 July 2020 refers.

Having considered the test report ref. J24741 issued on 5 December 2019 by Nutek Systems (HK) Ltd., this Authority accepts that the fitting described below complies with, and its use when correctly installed does not contravene, the Waterworks Ordinance and Regulations.

Name of Manufacturer: Grohe AG

Country of Origin: Germany

Brand: Grohe

Details of Fitting: 1/2" Single lever shower mixer

Model: 35600000 + 24093XX3
(where the digits "XX" denote the code of colour)

Body Markings: 

Expiry Date: 26 September 2024



This Authority hereby permits the use of the above fitting in fresh water plumbing systems subject to full adherence to Waterworks installation requirements. In particular, you are required to draw your customers' attention to the following requirement-

"The cold water supply to the fitting shall be drawn from the same source that supplies the hot water apparatus so as to provide a balanced pressure and to obviate the risk of scalding in the event of a restriction or failure in the water supply." AND

"The shower head or handspray should not be placed in submerged conditions and should be securely fixed to the original position after use."

A condition of this acceptance is that the fitting to be installed shall be replicas of the sample as certified by the testing agent mentioned above and without modifications. This acceptance may be withdrawn at any time if the standard of the fitting installed fail to meet that of the approved sample or if the fitting is found to be unsuitable for use in fresh water plumbing systems.

This acceptance is only applicable to the main body of the fitting, unless otherwise specified.

For the use of the fitting in any project, the General Acceptance Number of this letter must be quoted as a means of identification of acceptance of the fitting by this Authority.

Should you have any enquiries, please contact our Engineer Mr. Terry KUNG at tel. no. 3583 4086.

Yours faithfully,



(CHAN Chung-kun)

for Director of Water Supplies

Encl.

c.c. WSD 3321/1/82] - without catalogue
 ME/MC] - with soft copy only